

**SPECIFICATION**

**STAGE V**



**ROTATING TELESCOPIC HANDLER | 555-210R / 555-260R**

Gross power: 112kW (150hp) | Lift capacity: 5,500kg | Maximum lift height: 20.5-25.5m





# THE KING NOW HAS SWING.

The world's favourite telehandler is now available with a 360° rotating boom. Introducing the 555-210R and 555-260R with 21 and 26 metre reach respectively. Our new JCB rotating telehandlers are simple to operate and offer all-round productivity, versatility, efficiency and safety. With over 45 years of manufacturing heritage, building our Loadall telescopic handlers, supported by the best dealer network in the business, supreme reliability and peace of mind is assured.

## ALL-ROUND SIMPLICITY.

Our new rotating telehandlers have the same simple, well designed controls as our standard telehandlers, delivering a similar operator experience across machines.



## ALL-ROUND VERSATILITY.

Our machines combine the reach and lifting capability of a crane, the manoeuvrability of a telehandler and the access of a mobile work platform, for 3-in-1 versatility.

## ALL-ROUND SAFETY.

Our new rotating telehandlers are designed for complete safety, with best-in-class visibility and load management system to keep you safe and secure at all times.

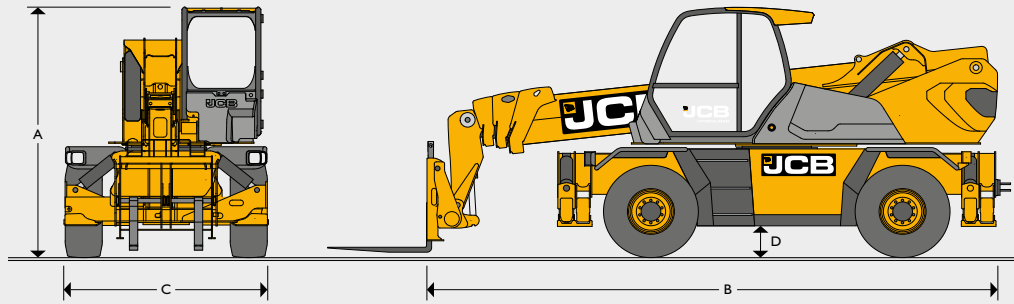


## ALL-ROUND PRODUCTIVITY.

Whatever the application, our rotating telehandlers have been extensively tested and proven in real world conditions to give you maximum performance.

## ALL-ROUND EFFICIENCY.

Using 85% of shared JCB components, plus proven manufacturing and assembly techniques, we provide the very highest levels of quality, reliability and efficiency.

**DIMENSIONS**

			555-210R	555-260R
A	Overall height	m	3.08	3.08
B	Overall length	m	6.92	8.09
C	Overall width	m	2.45	2.45
D	Ground clearance	m	0.35	0.35
	Max lift height	m	20.5	25.5
	Max reach	m	17.8	21.4
	Max lift capacity	kg	5500	5500
	Capacity at max height	kg	2500	2000
	Capacity at max reach	kg	850	300
	Overall weight	kg	17960	19400
	Front axle unladen weight (boom retracted and lowered)	kg	8260	8660
	Rear axle unladen weight (boom retracted and lowered)	kg	9700	10740
	Turning radius (over tyres)	m	4.29	4.29

**ENGINE**

Type		JCB Dieselmax Stage V
Displacement	litres	4.8
Gross power	kW (hp)	112 (150) @ 2200 rpm
Max torque	Nm	600 @ 1500 rpm
Cylinders		4 in line
Fuel		Diesel direct injection turbocharged
Fuel tank	litres	190
AdBlue tank	litres	26
Gradeability		40%
Batteries	volts	2 x 12
Cooling system		Water – intercooler

**TRANSMISSION AND HYDRAULICS**

Transmission model		Bosch Rexroth
Transmission type		Two-speed hydrostatic
Drive wheels		4-wheel drive
Steering mode		4-wheel steer – 3 steering modes

**HYDRAULICS**

Type		Variable displacement pump electronically controlled with variable displacement motor	
Flow rate	l/min		160
Movement control		2 servo electric joysticks	
Operating system pressure	bar		290
Tank capacity	l		160

**PERFORMANCE**

Rotation		Continuous 360° rotation of turret mounted on external slew ring with in cab manual slew lock	
Max travel speed			40kph

**AXLES**

Type		Dana Spicer – with epicyclic reduction gear	
Model		213	
Oscillation		±8° oscillation with automatic hydraulic lock out on rear axle	

**BRAKES**

Type		Power brakes hydraulically activated, oil-immersed multi-disc type on each axle	
Rear axle		SAHR park brake	

**OUTRIGGERS**

Type		4x telescopic outriggers with one touch auto deploy/level/retract	
------	--	---	--

**LOAD MANAGEMENT SYSTEM**

Full crane style load management system			
7" screen with rotary controller			
Envelope limits			
5 configurable speed profiles			

**CARRIAGE**

Type		Q-Fit carriage	
Attachment recognition		RFID	

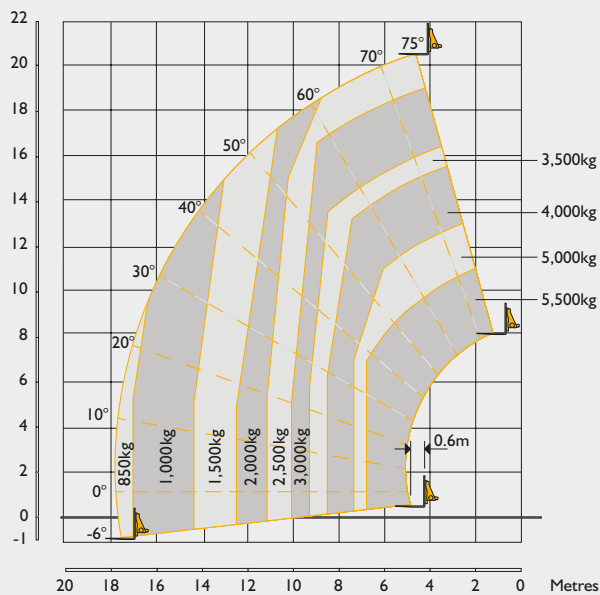
**TYRES**

Type		445 / 65 R22.5	
------	--	----------------	--

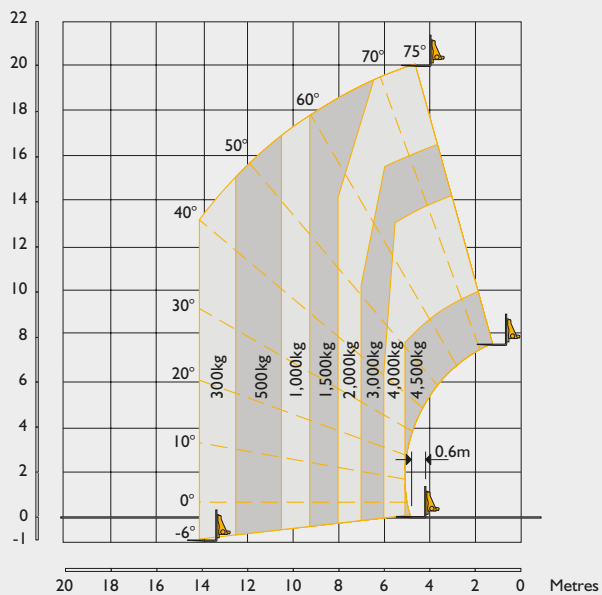
**STANDARD CONFORMITY**

EN1459-2
EN15830
EN14401
EN280
ROPS/FOPS
Stage V
ISO10896-2

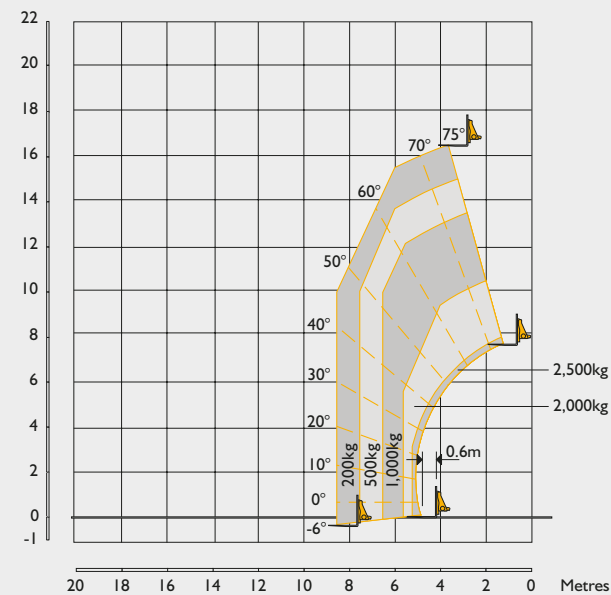
555-210R LIFT PERFORMANCE – FORKS, 360° WITH OUTRIGGERS DEPLOYED



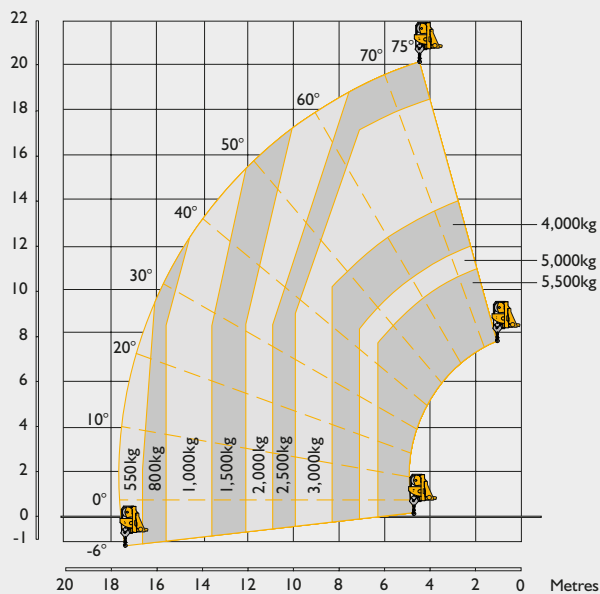
555-210R LIFT PERFORMANCE – FORKS, STRAIGHT AHEAD ON TYRES



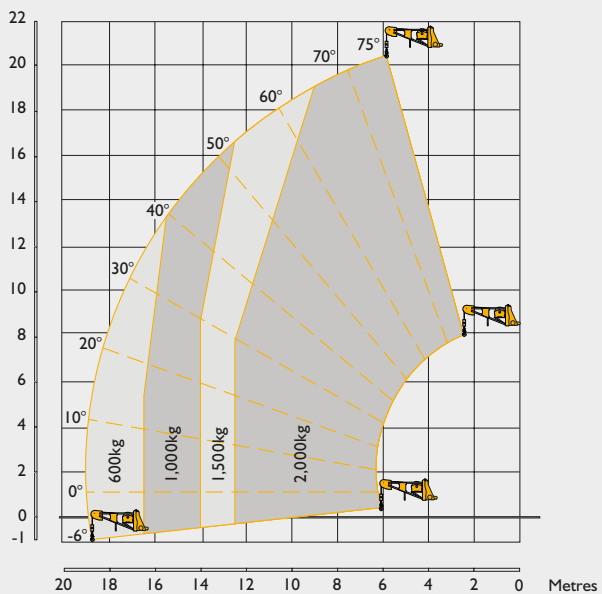
555-210R LIFT PERFORMANCE – FORKS, 360° ON TYRES



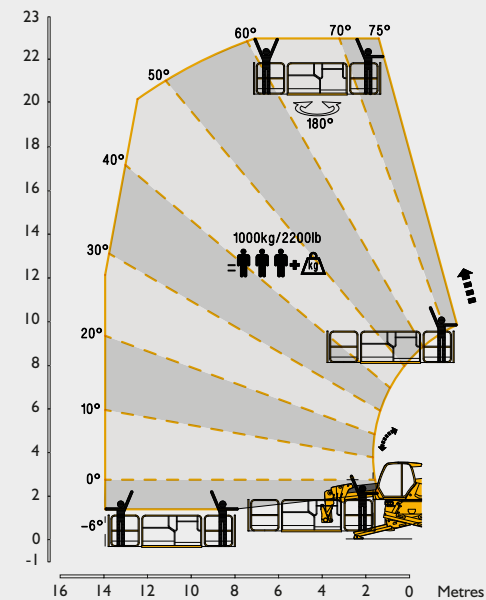
555-210R LIFT PERFORMANCE – 5.5T WINCH, 360° WITH OUTRIGGERS DEPLOYED



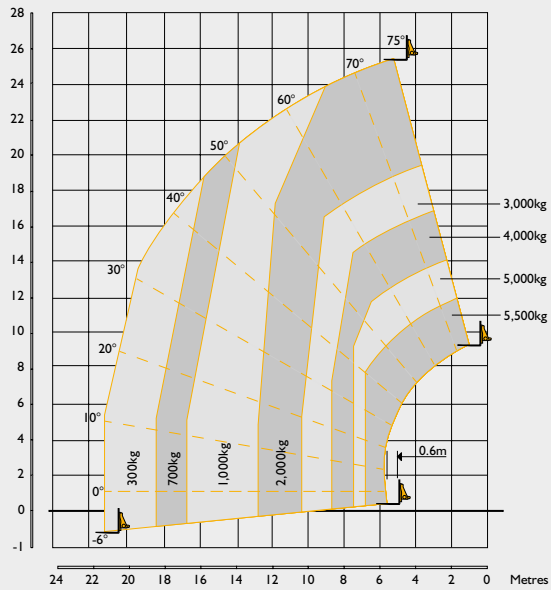
555-210R LIFT PERFORMANCE – 2T-2 METER JIB WINCH, 360° WITH OUTRIGGERS DEPLOYED



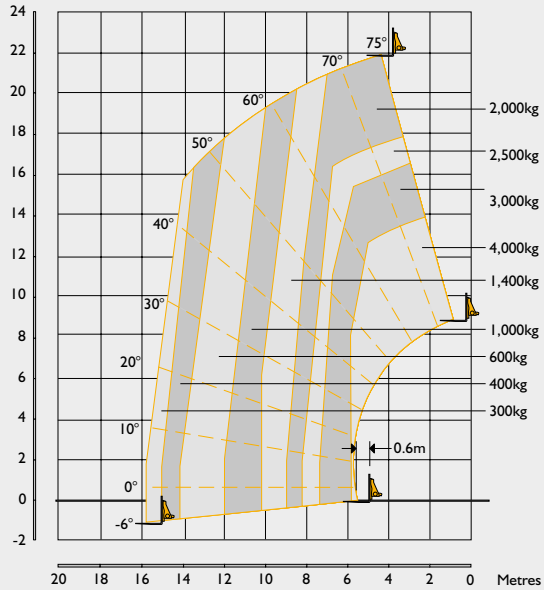
555-210R LIFT PERFORMANCE – 1000KG SLEWING MAN PLATFORM WITH OUTRIGGERS DEPLOYED



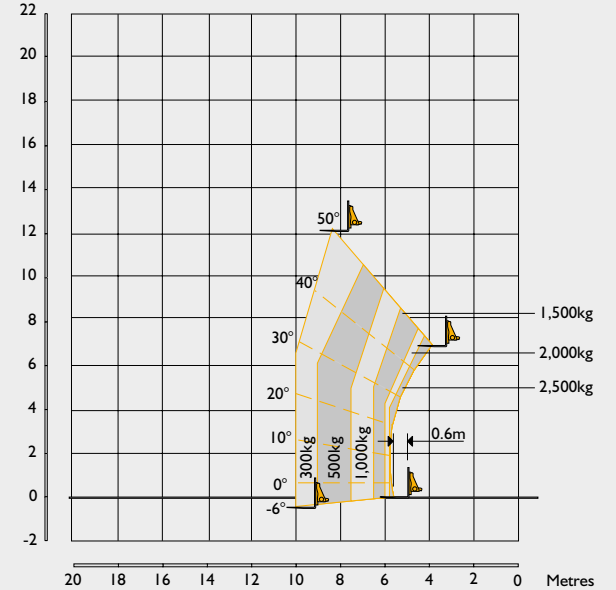
555-260R LIFT PERFORMANCE – FORKS, 360° WITH OUTRIGGERS DEPLOYED



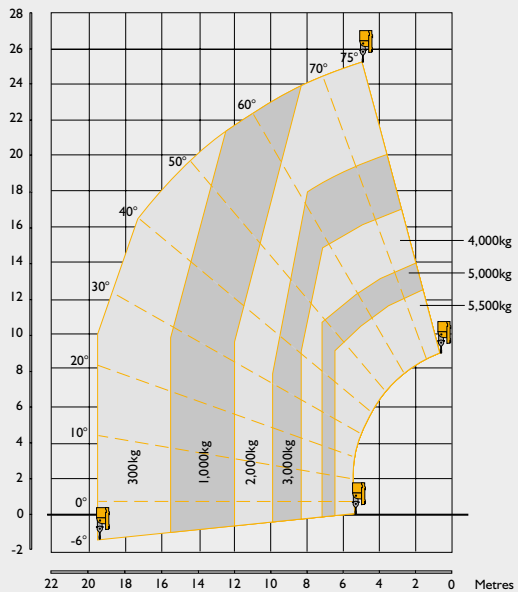
555-260R LIFT PERFORMANCE – FORKS, STRAIGHT AHEAD ON TYRES



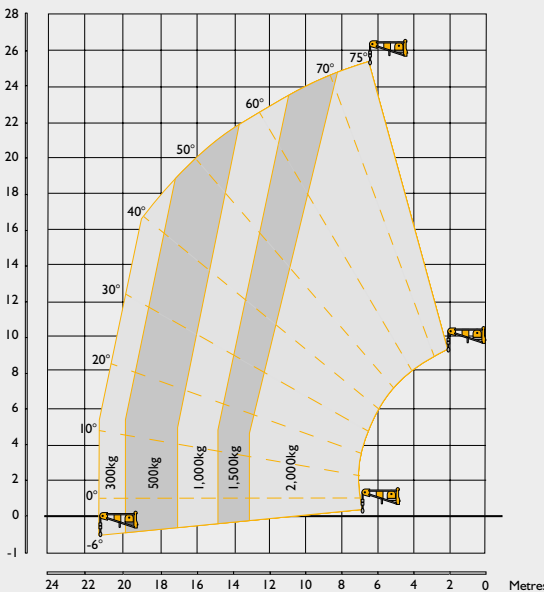
555-260R LIFT PERFORMANCE – FORKS, 360° ON TYRES



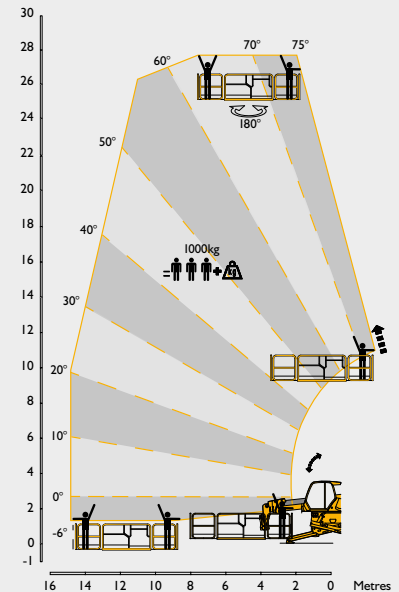
555-260R LIFT PERFORMANCE – 5.5T WINCH, 360° WITH OUTRIGGERS DEPLOYED



555-260R LIFT PERFORMANCE – 2T-2 METER JIB WINCH, 360° WITH OUTRIGGERS DEPLOYED



555-260R LIFT PERFORMANCE – 1000KG SLEWING MAN PLATFORM WITH OUTRIGGERS DEPLOYED







**ONE COMPANY, OVER 300 MACHINES.**

Your nearest JCB dealer

**Rotating Telescopic Handler 555-210R / 555-260R**

Gross power: 112kW (150hp) Lift capacity: 5,500kg Maximum lift height: 20.5-25.5m

JCB Sales Limited, Rokeceter, Staffordshire, United Kingdom ST14 5JP.

Tel: +44 (0)1889 590312 Email: [salesinfo@jcb.com](mailto:salesinfo@jcb.com)

Download the very latest information on this product range at: [www.jcb.com](http://www.jcb.com)

©2021 JCB Sales. All rights reserved. No part of this publication may be reproduced, stored in a retrieval system, or transmitted in any form or by any other means, electronic, mechanical, photocopying or otherwise, without prior permission from JCB Sales. All references in this publication to operating weights, sizes, capacities and other performance measurements are provided for guidance only and may vary dependant upon the exact specification of machine. They should not therefore be relied upon in relation to suitability for a particular application. Guidance and advice should always be sought from your JCB Dealer. JCB reserves the right to change specifications without notice. Illustrations and specifications shown may include optional equipment and accessories. All images are correct at time of print. The JCB logo is a registered trademark of J C Bamford Excavators Ltd.

