

**NEW!**

## ENGINE

Model	: ISUZU 4HK1X
Type	: Water-cooled, 4 cycle, 4 cylinders, line type direct injection, turbocharger, intercooler, electronic diesel engine
Power	: 172 HP (128 kW) @2000 rpm / SAE J1995 (Gross) : 162 HP (121 kW) @2000 rpm / SAE J1349 (Net)
Max. Torque	: 670 Nm @1600 rpm (Gross)
Displacement	: 5193 cc
Bore and Stroke	: 115 mm x 125 mm
Emission Class	: EU- Stage V

## UNDERCARRIAGE

X Type Lower Frame Construction Pentagon Box Type Chassis	
Shoe	: Triple grouser
No. Of Shoes	: 2 x 46
No. Of Lower Rollers	: 2 x 7
No. Of Upper Rollers	: 2 x 2
Track Tensioning	: Hydraulic Spring Tensioning

## CAB

- Improved operator's all round visibility
- Increased cabin internal space
- Use of six viscomount cabin mountings that dampen the vibrations
- High capacity A/C
- High resolution, LED backlight, color LCD display
- Opera Control System
- Cooled storage room
- Glass holder, book and object storage pockets
- Pool type floor mat
- Improved operator's comfort through versatile adjustable seat
- Ergonomically redesigned cabin through relocated switch board, and re-styled travel pedals and joysticks.

## TRAVEL AND BRAKERS

Travel	: Fully hydrostatic
Travel Motors	: Axial piston type
Reduction	: 2 stage planetary gear
Travel Speed	
High Speed	: 5,7 km/h
Low Speed	: 3,8 km/h
Max. Drawbar Pull	: 18.740 kgf
Gradeability	: 35° (%70)
Parking Brake	: Hydraulic multi disc type
Ground Pressure (600mm Shoe)	: 0,48 kgf/cm <sup>2</sup>

## LUBRICATION

Centralized lubrication system is provided for lubrication all difficult-to-reach parts on the components, such as boom and arm

## HYDRAULIC SYSTEM

Main Pump	
Type	: Double variable displacement axial piston pumps
Max. Flow	: 2 x 221 L/min
Pilot Pump	: Gear, 20 L/min
Relief Valves	
Attachment	: 350 kgf/cm <sup>2</sup>
Travel	: 350 kgf/cm <sup>2</sup>
Swing	: 306 kgf/cm <sup>2</sup>
Pilot	: 40 kgf/cm <sup>2</sup>
Cylinders	
Main Boom	: 2 x ø 120 x ø 85 x 1.300 mm
Stick Cylinder	: 1 x ø 135 x ø 95 x 1.520 mm
Bucket Cylinder	: 1 x ø 120 x ø 85 x 1.060 mm

## OPERA CONTROL SYSTEM

• Easy-to-use control panel and menus	• Improved fuel economy and productivity
• Overheat prevention and protection system without interrupting the work	• Automatic idling Selection of multi-language on control panel
• Automatic electric power-off	• Rear-view, arm-view camera (Optional)
• Maximum efficiency by selection of power and work modes	• Possibility to register 27 different operating hours
• Error mode registry and warning system	• Anti-theft system with personal code
• HİDROMEK Smartlink (Optional)	• Real time monitoring of operational parameters such as pressure, temperature, engine load
• Automatic preheating	
• Automatic powerboost	

## SWING SYSTEM

Swing Motor	: Axial piston type integrated with shock absorber valves
Reduction	: 2 stage planetary gear box.
Swing Brakes	: Hydraulic multi disc type, automatic warnings
Swing Speed	: 11,9 rpm

## CAPACITY

Fuel Tank	: 405 L	Engine Oil	: 19,3 L
Hydraulic Tank	: 152 L	Radiator	: 33 L
Hydraulic System	: 285 L	Urea Tank	: 16 L

## ELECTRICAL SYSTEM

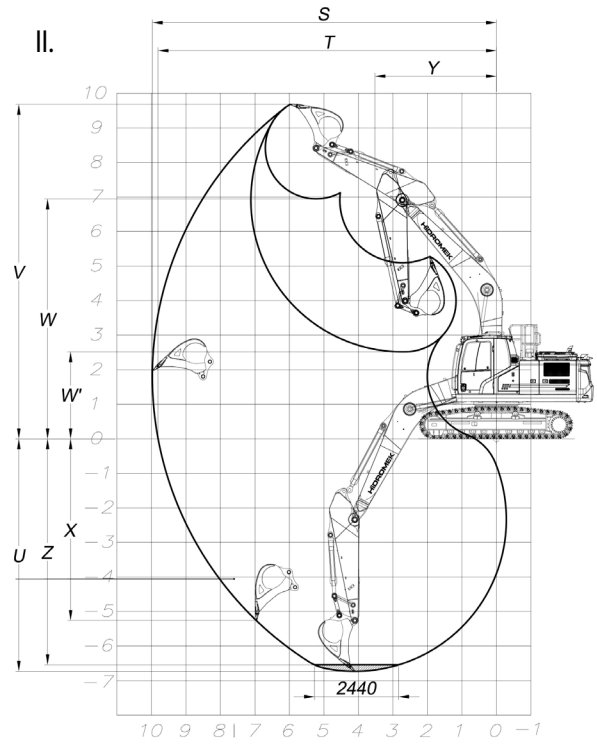
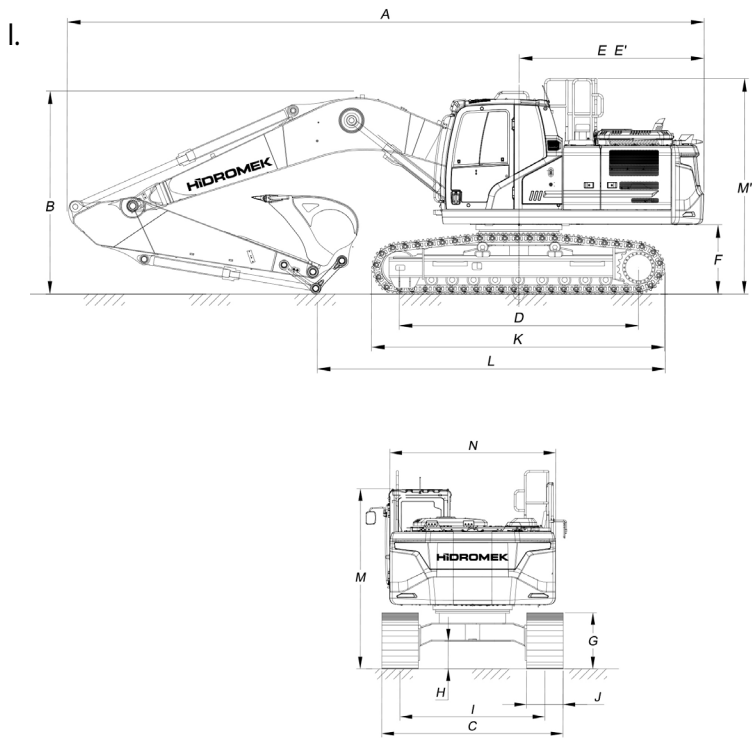
Voltage	: 24 V
Battery	: 2 x 12 V x 100 Ah
Alternator	: 24 V / 50 A
Starting Motor	: 24 V / 5 kW

## OPERATING WEIGHT

Standard machine operating weight	: 21.100 kg
-----------------------------------	-------------

Operational weight, complying with the ISO 6016 standards, includes full fuel tank, hydraulic system and other liquids, 75kg operator weight and standard equipped machine weight. Optional equipments are not included.





## I. GENERAL DIMENSIONS

Boom Dimension	5.70 mm
Arm Dimension	2.92 mm
A - Overall Length	9.720 mm
B - Boom (Shipping) Height	3.100 mm
C - Lower Frame Width	2.800 mm
D - Track Base Length	3.370 mm
E - Counterweight Distance	2.855 mm
E' - Countweight Turning Radius	2.900 mm
F - Upper Chasis to Ground Clearance	1.065 mm
G - Crawler Height	935 mm
H - Ground Clearance	465 mm
I - Track Gauge	2.200 mm
J - Shoe Width	600 mm
K - Lower Chasis Length (from shoe)	4.160 mm
L - Shipping Length	5.160 mm
M - Cab Height	3.010 mm
N - Upper Frame Width	2.500 mm

## II. WORKING DIMENSIONS

Boom Dimension	5.70 mm
Arm Dimension	2.92 mm
S - Maximum Reach Distance	10.030 mm
T - Maximum Reach at Ground Level	9.870 mm
U - Maximum Digging Depth	6.790 mm
V - Maximum Digging Height	9.860 mm
W - Maximum Unloading Height	6.880 mm
W' - Maximum Unloading Height	2.460 mm
X - Minimum Vertical Wall Digging Depth	5.470 mm
Y - Minimum Swing Radius	3.510 mm
Z - Maximum Digging Depth (2440 mm level)	6.610 mm

## DIGGING PERFORMANCE

Standard Bucket Capacity (SAE)	1,1 m <sup>3</sup>
Bucket Digging Force (Power Boost) ISO	13.000 kgf
Arm Crowd Force (Power Boost) ISO	10.200 kgf



**HİDROMEK®**

### FACTORY - HEAD OFFICE

Ahi Evran OSB Mahallesi Osmanlı Caddesi No:1 06935 Sincan / ANKARA / TÜRKİYE  
Tel: (+90) 312 267 12 60 Fax: (+90) 312 267 12 39  
www.hidromek.com

### Notice:

Hidromek has the right to modify the specifications and design of the model indicated on this brochure without prior notice.